



# Ellesmere

Co-ed 7-18 Day and Boarding

**Welcome to  
St Aidan's House**

**Years 9 - 11**

## Welcome to St. Aidan's House

Welcome to St. Aidan's House for students in Years 9 to 11. The House is made up of:

Housemistress	Mrs V Furlong Hart
Assistant Housemistresses	Mrs K Curzon and Dr R Hansford
Tutors	Ms B Davies Mrs A Savage Ms N Hughes Mrs R Waddams Mrs S Hutchon
Housemother	Mrs E Staples
Domestic	Mrs M Williams

### Introduction

St. Aidan's is 'home' to approximately 70 girls. Both boarders and day pupils are treated the same and are encouraged to integrate fully. You will have access to a member of staff at all times. During the day the Housemother is there to look after your domestic needs. There is a Duty Staff Member available during the evening and at weekends. All members of the House Staff share a responsibility in your welfare.

Your Personal Tutor is the first point of call for you. It is their responsibility to oversee their tutees academic and pastoral welfare. The Housemother will look after your domestic arrangements such as laundry arrangements, sewing on missing buttons, the galley organisation, etc. The Housemistress co-ordinates and facilitates the House and all House staff to ensure the smooth running of the House.

The aim is for tutors to move with their tutor group throughout Middle school to enable a firm relationship to develop.

Prefects too play a very important role in the running of the House and in supporting the younger members of St. Aidan's.

Please find below a miscellaneous list that attempts to answer some of the most frequently asked questions. Should you have any queries at all then please, don't hesitate to contact me at any time.

\* \* \* \*

### Are you new to St. Aidan's and/or boarding?

If you are a girl in Middle School in Years 9, 10 or 11, you are automatically assigned to St. Aidan's House if you are a day pupil or a boarder. Some may have been pupils in Lower School before moving to St. Aidan's while others may be completely new to Ellesmere College. Some people become boarders because of their family's situation. Perhaps their parents live abroad, or are away at work for long periods, or pupils live too far from the school to travel backwards and forwards every day. Others board because their parents feel that it is the best thing for them, or because pupils themselves ask to become boarders. Day pupils may join us because they want to become part of what the College has to offer, without having to board. There is also the opportunity of boarding occasionally if activities require you to do so, for example, if you are participating in a College play.

You are almost certain to find that, no matter what your reason for joining us, there will be other people in the same situation and they will know just how you feel.

This booklet is aimed at all St. Aidan's pupils. However, there is a lot of information about boarding that may not apply to you if you are a day pupil. Even if you won't be a boarder, you may want to read everything in it because it will help you learn more about St. Aidan's.

Many people are very enthusiastic about becoming a boarder – it's an exciting adventure. Others are not so keen. Whichever category you fall into, you are bound to feel a little scared because you'll be unsure of exactly how things will work out. It's important to remember that everyone wants you to enjoy your time here in St. Aidan's, so, if you do have a problem, make sure you ask for help. There are always people willing to help you.

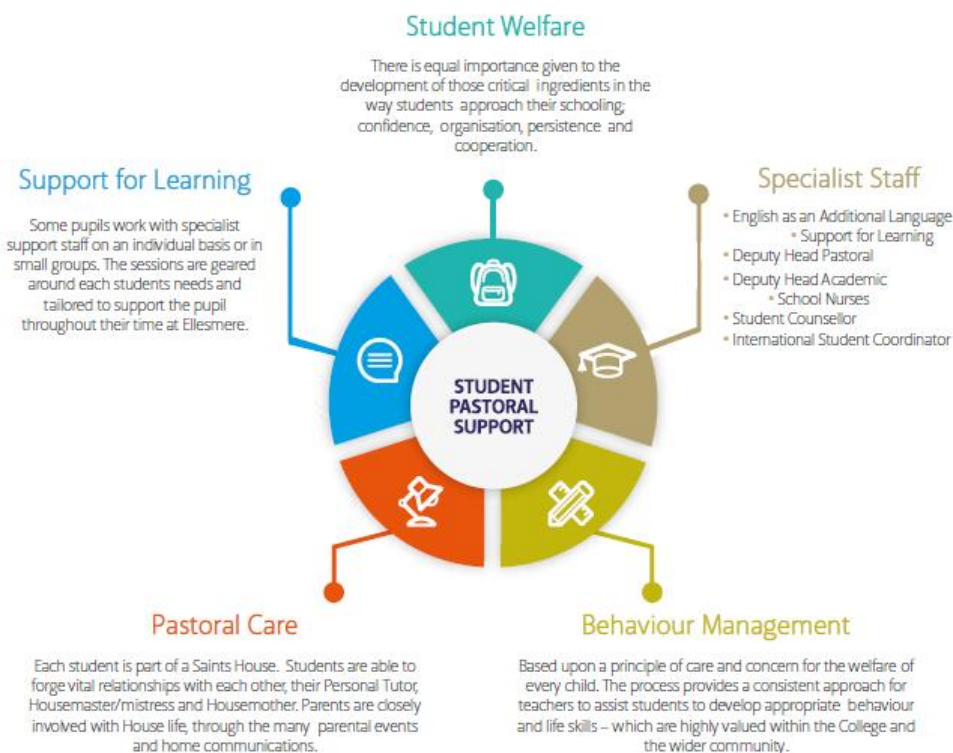
The aims and objectives of St. Aidan's are to provide a safe and welcoming environment for you to work in, to encourage you as an individual to perform to your maximum potential, academically, physically and socially, so assisting each pupil to develop into a mature and happy individual.

### Pastoral Systems

Your tutor should become the most important person to you during your time at Ellesmere College. In your starting pack, that you'll have already received, is an organisational chart that will help you understand the college structure in terms of Boarding Houses, Competitive houses and Staff organisation.

If you're finding your work difficult, you should talk to your tutor. If there is any reason why studying is harder for you than others, Ellesmere College has a Support for Learning Department. Your tutor can advise you on these matters.

## Pastoral Care



### Contacting House Staff

House staff will be on duty each evening until 11.00pm. Please use the numbers on page 16 to contact them or to leave a voicemail and they will return your call as soon as possible. Should you want to discuss anything with our Housemother Elaine, then she can be contacted on 01691 622321 ex 261 between 8.00am and 5.00pm or by e-mail at: [elaine.staples@ellesmere.com](mailto:elaine.staples@ellesmere.com).

I can be contacted by email at [st.aidans@ellesmere.com](mailto:st.aidans@ellesmere.com).

### St. Aidan's: Rooms

Boarding in a Middle School Boarding House involves sharing a room with one or more other person(s) as there are no single rooms. The benefits of working together, sharing and compromising are very much part of engaging in boarding life.

Our aim is to make the girls' stay in St. Aidan's as happy as possible. Without knowing the personalities of all of the girls initially it is very difficult to place pupils into rooms to achieve total satisfaction for all. While we try to please all, it is unlikely that this will be achieved in the first instance at the very least. If all are totally happy then FANTASTIC!

Usually, as the year progresses, we can achieve a good level of satisfaction for all. Thus, I would like you to be patient and be prepared to compromise where possible if the room situation is not quite to your satisfaction. It is important you speak to your Personal Tutor, Housemaster, Duty Staff or the Housemother if you have an issue with your room colleague(s).

A review of the rooming organisation is undertaken periodically. It is important to note that the House has the right to change matters at relatively short notice after having discussions with the appropriate person(s) concerned. Fortunately, on most occasions, we have been able to undertake changes with agreement/satisfaction of all concerned. A great deal of thought goes into making room changes!

We generally place girls in rooms at random in the first instance after considering a number of factors and situation and circumstances. You will notice that some rooms are slightly bigger than others. If you are allocated a smaller/larger room then I would take this into consideration when undertaking any future room changes. The same principle would apply with regard to the furniture in the room.

It is important that you report any damages to the House Staff. Any damages in that room are charged to the person who caused the damage – if this not known then the girls in that particular room will be charged as the room is their responsibility – hence the need to keep the room locked when not present in the room.

The girls are responsible for ensuring the care of the room. Please do not move any furniture without the permission of the House staff – you could be charged to move it back!

I hope you can see that we try to operate a basis of 'fairness' where possible

Vickie Furlong-Hart

Housemistress, St. Aidan's

## General Information

### Travel for Leave and End/Beginning of Terms

It is essential for travel plans to be forwarded to myself, Elaine (Housemother) and your daughter's Personal Tutor in good time prior to departure. Please do not arrange for arrivals and departures to take place during late evenings or throughout the night as College staff generally have to work the following day. I also would not wish your daughter to be tired for the following day's work. We are able to assist with the organising of taxis to and from airports but it is not our sole responsibility – the school has a list of taxi firms who are very familiar with the school.

### Boarders Weekend Leave

Permission for weekend leave requires a telephone call or email from parents or guardians during the week (at least 48 hours) prior to the weekend leave. Girls will only be given permission if they are not required to fulfil a school commitment on the weekend. Girls will be expected to fulfil any weekend school commitments before they go out on leave. If girls are going to another pupil's home then permission is also required from the host parents.

Pupils are allowed into Ellesmere Town at weekends subject to permission.

### Day Pupils Boarding

If any girls wish to board, permission must be sought well in advance. Permission will not automatically be granted as we have very limited boarding space. A charge per night will be levied other than in circumstances where the School has requested a girl to board.

### Absence

If your daughter needs to be away from school or is absent due to illness, please contact the Housemistress either prior to the absence or on the morning of the day in question. In the unusual circumstance that you are taking a family holiday in term time permission should be sought from the Headmaster directly.

### House Subs

A levy of £10, a standardised amount throughout the College, will be added to the bill per term.

### Uniform

The school rules outline what is expected in this area. However, in order to avoid any potential embarrassment, please ensure that any bizarre or extreme hairstyles or hair colour are corrected before the start of term.

All clothing, whether casual or part of the school uniform, must be labelled with your daughter's name.

### Pocket Money

As a boarder you may like to have a small amount of money to use for pocket money, however, you must not keep large amounts of money in your room.

Pocket money can be held safely by your Housemistress/Housemother until the time that you need it. However, it is much better to have a bank account if possible.

### Security

All girls – day or boarding – have lockable areas in their rooms. If you wish to ensure that these are usable from the outset then please bring a padlock and keys with you at the start of the year. Day pupils in particular are reminded of the importance of using their lockers to keep valuables safe. Boarders will also be issued with a room key.

### Posters

Girls are encouraged to personalise their rooms and areas and may bring posters to display on the pin boards in their studies. These should be within the realms of decency and good taste!

### Electronic Devices

Although all pupils have access to the House computers boys may of course bring their own laptops and tablets (not PCs) to College with them. The House has wireless internet throughout.

Boarders should note that the use of computers to watch DVDs outside of the normally permitted viewing time is not allowed. Music players are all permitted too but must be kept locked away when not in use. Music certainly makes things feel more like home. It is worth giving some thought to what music to bring with you when choosing from your collection. It is not a good idea to bring music containing bad language that some people might find offensive, as you will find it being sent home again. Make sure you bring some headphones! Pupils are allowed to bring their personal gaming machines and screens. However they are to be stored in the Housemaster's office and requested and returned as required. Game players can only be used in the Computer Room. They must be used appropriately at all times or risk confiscation.

Your laptop, iPad, Tablet and mobile phone will be collected in each evening. This is to ensure that you get a good night's sleep without the temptation to 'chat to friends'. You will therefore require a separate alarm clock in your room. You must ensure you record your mobile number with the House.

You will not be allowed to use your phones during lesson time and prep times, they should be locked away during the school day. If mobiles are used inappropriately, they may be collected by a member of staff or a School prefect and returned to you at an appropriate time as ascertained by the member of staff (or even to your parents with an accompanying communication).

### Pets

Sorry – no pets allowed!

### Furniture

For a variety of reasons (but mainly fire regulations), pupils are not allowed to bring their own items of furniture.

\* \* \* \*

### Getting Prepared

It's always a good idea to be organised, especially for something as important as starting at a new school. So here are a few tips.

### School Uniform

Your parents should have a copy of the clothing list, and will probably need to take you shopping. They can access the school uniform shop directly or on-line: [School Shop Direct](#). No one likes to start at a new school

with the wrong uniform or skirts & blouses that don't fit. So be patient with your parents – they want to get it right for your benefit. Please note that school skirts or suit skirts, must be knee length or longer.

All girls usually look very smart and St. Aidan's girls will meet the highest standards. Light make-up and one pair of plain, small earrings/studs are permitted in the ear lobe; hair should be tied-up during the working day if it is long enough and not dyed or styled in any extreme way. Nail polish or nose rings/studs are not allowed.

All clothing, whether casual or part of the school uniform, must be labelled with your daughter's name.

### Casual Clothes

If you are a boarder, after lessons, and at weekends, you will be allowed to change into your own casual clothes from home, which should be appropriate in style (please see Parental Handbook). You are advised to limit what you bring, so that you don't run out of storage space. As a result, it is well worth spending a little time choosing what you want to bring to school with you. Any items of clothing with offensive logos should be left at home.

### Naming

This is a job for your parents, but it's **vital** that **all** of your things are named. With so many people living in the same place, and everyone's clothes being washed in the same laundry, things can get lost very easily if they don't have your name on. Your parents will probably have ordered some name tapes and will be busy labelling your new uniform. Make sure that you get your casual clothes named as well. Everything should be named including your shoes, watch, books, iPod, laptop, iPad/tablet...and even your teddy!

### Laundry

For boarders the laundry is collected each week and returned washed and ironed a couple of days later – as if by magic. However, you are expected to change your bedding very week and make your own bed. If you wish to have expensive items laundered then it is recommended you sign them out of House with the Housemother.

### Bedding

The School does provide bedding. However, if a pupil wishes to bring their own that is fine.

### Boot Bags

It is essential to have a bootbag for games to store your boots, water bottle and room key when you are participating in games.

### Mugs, Bowls and Beakers

Whilst the House kitchen has glasses and crockery, it is recommended that you bring your own mug for hot drinks and a bowl for cereal snacks in the evening.

### Electrical Items

We understand the need for some electrical goods to be brought into College such as laptops, mobile phones, hairdryers, gaming equipment, etc. However, for everyone's safety please make sure that they conform to British Standards.



No fittings other than UK fittings are to be placed directly into UK sockets. This includes the use of “travel” adapters. Such adapters are not licensed for long-term use and the fire authorities will not pass them for permanent use in the Houses. All electrical items are to have a UK style plug placed upon them if connected to the mains. The use of 4-way trailing adapters is permitted if they are to UK specifications. However, one adapter should not be connected to another.

Students are encouraged to exercise sensible electrical safety. The College retains the right to remove electrical items if they are considered to be unsafe and likely to cause a breach of Health and Safety policy. The UK supply is 230/240 volts, ac, 50Hz. Please ensure that any items brought to the College are compatible with this supply – many overseas items are not.

The following items are not to be brought for use in College (this list is not exhaustive):

- Heaters, toasters, portable grills etc
- Microwaves
- Fridges
- Kettles
- Stoves/Portable gas appliances for cooking in rooms
- TV’s and large monitors for games

As a rule, these items will be removed from the Boarding House and held for safe keeping until their return home.

If you have any queries about the College electrical safety policy, please contact the Director of Operations at the College.

### Alarm

Bring an alarm with you other than the one you may have on your phone.

### Stationery

It’s well worth making sure you’ve got all the appropriate pens, pencils, pencil sharpener, rubber, ruler, compass and protractor. If you run out, there is a small selection of items to purchase in the Tuck Shop. All your teachers will be expecting you to be prepared for their lessons.

### Valuables and Insurance

It can be comforting to bring a few ‘luxuries’ from home, and these are often valuable (whether financial or personal value). Unfortunately, the **College cannot accept responsibility** for your valuables going missing or getting broken, but there are a few things that you can do to help.

- Firstly, make sure that your possessions are named (possibly in several places).
- Each boarder is given a lockable space in her bedroom, so use it sensibly for the belongings that are most valuable to you. You will need a small padlock to secure your belongings.
- Day girls each have a lockable cupboard. You will also need a small padlock to secure your belongings.

We will do our best to help find anything that has been lost, but the more information we have the easier it is and it also enables us to prove things are yours in case of an argument.

The School does not hold any insurance to cover loss or damage of pupil's personal property. We strongly recommend that an "All Risks" insurance policy be taken out by parents to cover their child's property whilst at school. This should include computers, laptops, tablets, mini disc players, hi-fi equipment, mobile telephones, etc. Cover may be obtained through the Finance Secretary, or through this link: [Pupil personal effects insurance](#).

### Family & Friends

It is nice to have an address book (or similar) with phone numbers and addresses of your family and friends. Full boarders especially, can find themselves spending quite a bit of time away from home. Letters, emails and the phone are good ways of keeping in touch. It is always nice to receive something through the post, and it is worth remembering that people are more likely to send you a letter if you write to them first!

### Skills

When you live at home there are things that your parents often do for you, that you'll be expected to do for yourself when you are boarding. Many of these things can be learnt as you go along. However, a few skills would be useful for you to have before you arrive, and it's worth getting your parents to give you a few lessons in:

- cleaning your shoes with polish and a brush
- changing your bedding – particularly putting a clean duvet cover on

Although these are useful skills to have, don't worry if you don't quite have the hang of them before you start. You will get plenty of practice and become an expert soon!

\* \* \* \*

### Settling In

Everyone is different. Some people seem to settle into a new environment within hours while, for others, this takes a couple of months. Either way, there are a few things that are worth bearing in mind to help things go as smoothly as possible. Remember, even if you find boarding life easy to get used to, there will be others who will struggle at first and would benefit from your help and support.

### Getting your Bearings

It always takes a while to learn your way around a new school. You'll probably have had a tour of the school when you came to visit with your parents. However, you won't remember everything and nobody expects you to. Feel free to ask for any help you need or check the plan on the notice board.

### Making Friends

This is the most important thing that you need to do. Ellesmere College is made up of all sorts of people with a wide range of personalities and interests. As a result, there are bound to be lots of people you'll make friends with, and probably one or two you'll find it more difficult to get on with. However, it's not a good idea to go by first impressions – give everyone a fair chance. It's especially important that you get yourself involved in whatever is going on while you're still settling in. The best way of making friends is through having fun with others, so get out there and enjoy yourself!

### Homesickness

It's natural to miss home, and most people get a bit homesick to start with.

Homesickness is most likely to strike when you have too much spare time. During the day, you are likely to be too busy with lessons and games. The evenings, for boarders, can be more difficult as this is often the time when you may miss your family and friends. Here are a few tips:

- Try not to spend too much time on your own. Chatting with others is a great way of getting you to think of other things, and helps build friendships.
- A teddy or a special toy is often a great source of comfort.
- Keep busy. Make an effort to join in with any activity.
- Writing a letter or e-mail home is often more helpful than using the telephone.
- Talking to someone about your feelings can be a real help. The staff in your House will be happy to listen, but you may prefer to talk to a friend or your buddy.

### Fire Drills

As you would expect, house-keeping and certain procedures need to be understood. One of the most important for your own safety has to be the Fire Alarm/Drill.

It's important that the fire drill routines be adopted in case of a fire drill or an emergency. These procedures are displayed in your rooms and on the House notice board and each pupil has the responsibility to make sure she understands exactly what to do in the case of a fire.

### Academic and Extra Curricular Activities

Ellesmere College offers many extra-curricular activities. This means that your days will be very busy. When you start at Ellesmere you may be confused with all the different things to do. Don't worry. Your tutor will go through your timetables with you and explain what is on offer.

Each pupil is put into a Competitive House. During all competitions whether it be sporting, singing, drama, etc, you'll represent and support your House as a team effort rather than as an individual. Again, your tutors will let you know which House you are in if you have forgotten.

### Scholarships

Some of you may have entered Ellesmere College on a scholarship because you have talent in certain areas such as in an academic subject, music, sports or in the performing arts. There are meetings held for scholars for you to attend during the course of the year.

### Additional Support

On occasion, you may feel in need of some additional support either emotionally or spiritually. Ellesmere College has both a Counsellor, Joanne Smith (07940173738), and a Chaplain to meet these needs. You can either seek help directly or go through your Housemaster or the Nursing Staff.

### Complaints Procedure

If you are unhappy about anything there is a procedure for you to follow. The complaints procedure is displayed on the House notice board.

### PHSE

Personal, Health and Social Education plays an important part of your education. PHSE lessons are held every Thursday morning throughout the academic year. Studies may include: sex and personal health education, careers, self-defence, etc.

### Child Protection

There are a number of designated staff for safeguarding, including the Head of Middle School, Mrs S Phillips, along with both the Deputy Heads Dr R Chatterjee and Mrs V Pritt-Roberts. If you have any concerns regarding your own or your friend's personal safety, you may wish to contact one of them. Contact may be done through your tutor, House staff or directly.

### Discipline

Ellesmere College has very high expectations of behaviour from its pupils. As with any establishment, rules are a necessity for the effective running and for everyone's happiness. Good behaviour is rewarded; however, displaying inappropriate behaviour is not acceptable. Continued poor behaviour will result in a pupil going through the discipline procedure. This procedure is displayed on the House Notice Board.

### Prep

School means lessons, and lessons mean prep (homework). You will be given a prep timetable by your form tutor as well as a lesson timetable. Your teachers will set you prep on a regular basis. It is an important support to the work you do in class and you must complete this. If you fail to meet deadlines your teachers will not be impressed and sanctions may follow.

Your form tutor will give you a prep diary to record and help you organise your work. She will want to check this regularly to make sure that you have everything under control. You will have some time during the school day to get this work done, but are likely to need some extra time. As a result, there are prep sessions in the evening for all boarders. It is worth remembering that it is important that you get your prep done and to a high standard.

### Tuck

Toiletries, school equipment and other 'goodies' can be brought from home or purchased from the College tuck shop. However, sweets are to be eaten in moderation and must never replace a meal.

### Contacting Home

It is important to keep in touch with your family especially if you are a boarder. They will be missing you very much, and will be keen to know how you are enjoying your time as a boarder. There are a number of ways of contacting them:

- Mobile Phones - Boarders may bring mobile phones to Ellesmere College provided they are used at the appropriate times. They should not be taken into lessons and must never be used after lights out.
- Emails, Skype, Face time, etc - Wireless internet connection is available, so you can use your own laptop, phone or tablet during your free time. Internet access can also be accessed through the computers in the Quiet Room.
- Letters - People love to receive letters. By writing to your parents, aunties and uncles, cousins and friends, you will definitely score some 'brownie points' and it does your popularity no harm at all.

Sending letters also increases the chances of receiving letters through the post, which is still exciting.

### Church Services

Ellesmere College is a Christian College and regular church services are expected to be attended by all.

### Medical Issues

Sisters and the visiting Doctor hold regular surgeries each day. The times of the surgeries are posted on the House Notice Board. There is always a member of medical staff on call at all times. Ellesmere College also has a Sick Bay where you can stay and be looked after if you are feeling unwell at any time. MEDICATION MUST NOT be kept in House. Any medications or supplements must be registered with the School Medical Staff.

### Weekends

Saturday:

At Ellesmere College, we don't have lessons on Saturday mornings but pupils who play in sporting teams will be expected to play in fixtures both home and away at this time. All other pupils will be encouraged to attend one of the many organised activities on offer. During Saturday afternoon boarding pupils may seek permission to go into Ellesmere town.

Sunday:

Most of us enjoy a lie in on Sunday morning after a very busy week and breakfast is served later on Sunday to allow for this. On Sunday afternoon, pupils will be encouraged to attend one of the activities either on site or off site.

### Exeat Weekends

Midway through each half term in the Michaelmas and Lent Terms the College has an Exeat Weekend when boarders often go home. If any boarders are unable to go home they may organise a stay with friends and/or a guardian (subject to appropriate guardian responsibility). If they plan to spend the weekend in one of the towns or cities within reach of Ellesmere in order to take advantage of the cultural opportunities offered by these larger centres, then a guardian must take full responsibility for their care. For this, boarders will need written permission (email is fine) from a parent or guardian in the week prior to departure. We encourage boarders to try and get off site if possible as the Exeat weekends are designed for some rest and relaxation in the middle of a busy term.

### Week Day Routine

7.30am – 8.10am	Wake-up, go to Breakfast Wash, brush teeth, tidy rooms
Boarders & Day Pupils	
8.30am	Registration in Tutor Room
8.40am	School Assembly/House Meetings/Chapel/Tutor time
9.10am	Go to first lesson of the day Quiet Time: Monday, Wednesday & Thursday
5.30pm	School Ends – day pupils leave for buses/collection

Boarders Only

- 6.00pm Supper
- 6.45pm Roll Call in the Day Room (7.00pm on Friday and Saturday)
- 6.50pm Quiet time (prep)
- 8.15pm Free time (you must ask permission from Duty Staff and sign out)
- 9.00pm Return to House (BEFORE the last dong of the clock) - Roll Call
- 9.30pm Start of bedtimes as below:

	Yr 9	Yr 10	Yr 11
9.30pm	Bed time		
9.45pm	Lights out	Bed Time	
10.00pm		Lights out	Bed Time
10.15pm			Lights out

Bedtimes are 15 minutes later on Friday and Saturday evenings.

**SATURDAY ROUTINE FOR BOARDERS**

- 8.30am – 9.10am Breakfast
- 9.30am Roll Call in the Day Room - Leave cards signed and pocket money given out from office
- 10.00am Activities for those not in teams. Meet CR duty teacher outside CR at 10am prompt. Fixtures - Ellesmere leaves for those in afternoon matches.
- 12.30pm Lunch and Roll Call in Dining Hall
- 1.00pm Ellesmere Leave (*remember to sign out and back in with House Tutor or Duty Tutor who is based in C.R.*)
- 5.00pm Roll Call in the Day Room
- 6.00pm Supper
- 7.00pm Roll Call in Day Room then quiet time in House
- 8.00pm Sign Outs. Takeaways may be delivered
- 9.00pm Roll Call in Day Room
- 9.30pm Bedtimes (15 minutes later than normal)

Elaine, Housemother, is in from 9.00am until 12.00pm

**SUNDAY ROUTINE FOR BOARDERS**

- 9.30am-1.00pm Brunch in Dining Hall
- 10.00am Roll Call in Day Room
- 2.00pm Roll Call in Day Room
- 6.00pm Supper
- 7.00pm Roll Call in Day Room
- 8.00pm Sign Outs
- 9.00pm Roll Call in Day Room

9.30pm

Bedtimes start

\* \* \* \*

### And Finally...

There are so many opportunities that are available for you to experience and enjoy at Ellesmere College and your parents will be hoping that you will have a great time. Take advantage of these chances while they are there as the time passes so quickly and you will soon move on.

Make the most of being a member of St. Aidan's. You will find fun and friendship while you are here. Holidays provide a chance to recharge your batteries and enjoy some quality time with your family. If you can make the most of both, you'll thoroughly enjoy being at Ellesmere College.

Welcome to the St. Aidan's family!

Mrs V Furlong Hart – Housemistress

\* \* \* \*

Contact Details:

Housemistress:	Mrs V Furlong Hart	<a href="mailto:st.aidans@ellesmere.com">st.aidans@ellesmere.com</a> 01691 626519
Assistant Housemistresses:	Mrs K Curzon	<a href="mailto:kate.curzon@ellesmere.com">kate.curzon@ellesmere.com</a> 01691 626321 x 224
	Dr R Hansford	<a href="mailto:rachael.hansford@ellesmere.com">rachael.hansford@ellesmere.com</a>
Tutors:	Ms N Hughes	<a href="mailto:nia.hughes@ellesmere.com">nia.hughes@ellesmere.com</a> 01691 622321 x 315
	Mrs R Waddams	<a href="mailto:rhiann.waddams@ellesmere.com">rhiann.waddams@ellesmere.com</a> 01691 622321 x 224
	Mrs A Savage	<a href="mailto:anne.savage@ellesmere.com">anne.savage@ellesmere.com</a> 01691 622321
	Ms B Davies	<a href="mailto:beth.davies@ellesmere.com">beth.davies@ellesmere.com</a> 01691 622321
	Mrs S Hutchon	<a href="mailto:sarah.hutchon@ellesmere.com">sarah.hutchon@ellesmere.com</a> 01691 622321
Housemother:	Mrs E Staples	01691 622321 x 261
House Mobile:		07587 450491
Sick Bay:	Sanitorium Sisters	<a href="mailto:sisters@ellesmere.com">sisters@ellesmere.com</a> 01691 622321 x 229
Reception:		<a href="mailto:reception@ellesmere.com">reception@ellesmere.com</a> 01691 622321

**Ellesmere**  
Co-ed 7-18 Day and Boarding

Ellesmere College, Ellesmere, Shropshire, SY12 9AB

**Email:** [registrar@ellesmere.com](mailto:registrar@ellesmere.com) **Tel:** 01691 622 321

For more insights into Ellesmere College, follow us on:



/ellesmerecoll

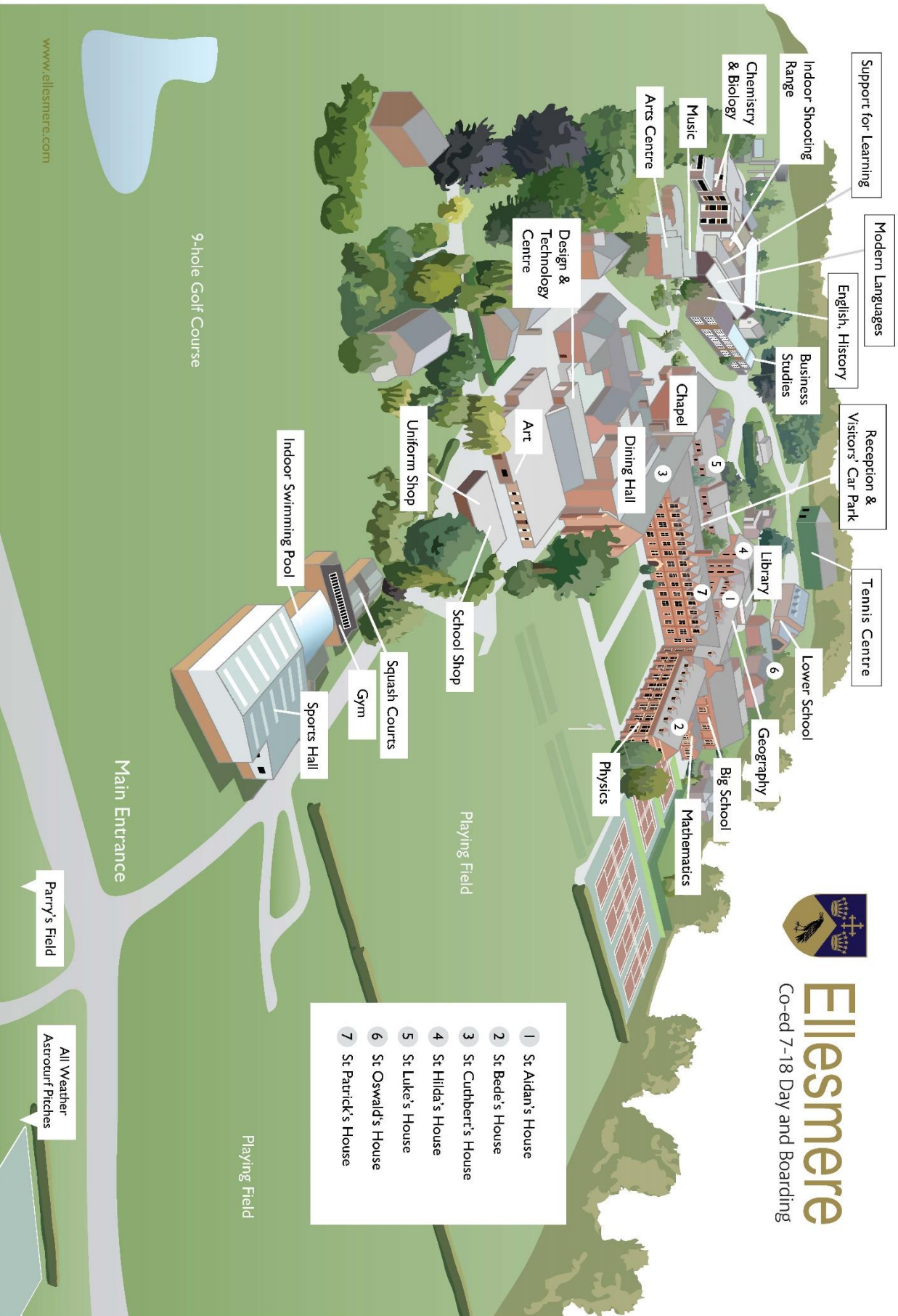


@ellesmerecoll



ellesmere\_college





www.ellesmere.com